

PACIFICATION

OHV31
1.5HP



OHV80
2.4HP



OHV160
5.5HP



OHV270
9.0HP



OHV390
13.0HP



	OHV31	OHV80	OHV90	OHV120	OHV160	OHV200	OHV270	OHV340	OHV390	OHV390E
Tipo motor Motor type	OHV. Motor con válvulas en culata de 4 tiempos con cigüeñal horizontal con salida de chaveta / cónica. Overhead valve (ohv) engine , 4 stroke with key or conic crankshaft connector									
Arranque Ignition system	Manual									Manual y Eléctrico Manual and electric
Potencia / Power	1.5HP	2.4HP	2.8 HP	4.0 HP	5.5HP	6.5HP	9.0HP	11.0HP	13.0HP	
Revoluciones No-load rpm	4000rpm	3600rpm		3600rp		3600rpm			3600rpm	
Capacidad pistón Displacement	31cc	80.7cc	90 cc	118cc	163cc	196cc	270cc	337cc	389cc	
Tipo cigüeñal Crankshaft type	-	Chaveta P		Chaveta S	Chaveta L,Q	Cónica V Chaveta S	Cónica V Chaveta Q,S	Cónica V Chaveta Q,S		Chaveta Q
Cap. depósito Fuel tank capacity	0.65L	1.2L		3.6L		6L		6.5L		
Carburante Fuel type	95 sin plomo / 95 unleaded									
Peso / Weight	3.5 Kg	10.6 Kg	12Kg	15Kg	17Kg	25Kg	31Kg	32Kg	35Kg	


ARRANQUE COMPLETO
Recoil starter

188090001 OHV80/90
78011001 OHV160
78011002 OHV270
78011003 OHV390

ARRANQUE COMPLETO METAL
Metallic Recoil starter

78011011 OHV160


POMO ARRANQUE
Starter knob

78004001 OHV160/270/390


ROLLO CUERDA ARRANQUE
Starting rope roll

78016001 100m x 4,5 mm
78016002 100m x 3,5 mm
78016003 100m x 4,0 mm
78016004 100m x 5,0 mm
78016005 80m x 6,0 mm

MUELLE ARRANQUE
Spiral spring

188090069 OHV80/90


INTERRUPTOR ENCENDIDO
Engine stop switch

78007001 OHV160/270/390


BOBINA CORRIENTE
Ignition Coil

188090063 OHV80/90
78017001 OHV160
78017002 OHV270/390
78017003 OHV120

PIPA BUJÍA
Spark plug cap

78018001 OHV160/270/390


POLEA ARRANQUE
Starter bush

188090003 OHV80/90


VENTILADOR
Fan

188090004 OHV80/90


VOLANTE DEL ARRANQUE
Flywheel

188090005 OHV80/90


INDUCTOR I
Air shroud I

188090006 OHV80/90


INDUCTOR II
Air shroud II

188090007 OHV80/90


RETEN DE ACEITE
Oil seal

188090012 OHV80/90


ALARMA ACEITE INTERIOR
Oil level switch

188090014 OHV80/90
78029001 OHV160
78029002 OHV270/390

CORONA DEL EJE
Governing driving gear

188090013 OHV80/90


CIGÜEÑAL Crankshaft

188090015 OHV80/90
78025003 OHV390 "CHAVETA Q"
78025013 OHV390 "CHAVETA S"
78025023 OHV390 "CHAVETA V"

CHAVETA
Key

188090016 OHV80/90


CORONA ARRASTRE
Timing gear

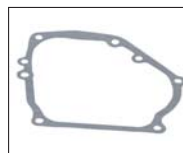
188090017 OHV80/90


ÁRBOL DE LEVAS
Camshaft assembly

188090019 OHV80/90


CARCARA VENTILADOR
Fan case

188090002 OHV80/90


JUNTA TAPA
Crankcase gasket

188090024 OHV80/90


TAPÓN DEPÓSITO ACEITE
Oil filler cap assy

188090025 OHV80/90
78015001 OHV160
78015002 OHV270 OHV390

JUEGO DE JUNTAS
Gasket kit

78003001 OHV160
78003002 OHV270
78003003 OHV390
78003004 OHV120

KIT PALANCA REGULADORA
Governing lever kit

188090053 OHV80/90



PALANCA ACELERADOR
Throttle control rack
188120002 OHV120/160



PALANCA REGULADORA
Control lever
78022001 OHV160
78022002 OHV270
78022003 OHV390



MUELLE REGULADOR
Governor spring
78020001 OHV160
78020002 OHV270
78020003 OHV390



GOBERNADOR DE GAS
Control lever
78019001 OHV160
78019002 OHV270
78019003 OHV390



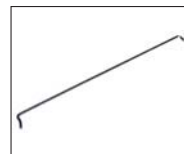
EJE GOBERNADOR
Governing shaft
188090058 OHV80/90



BRAZO GOBERNADOR
Governing arm
188090061 OHV80/90



MUELLE GAS
Governor rod spring
78021001 OHV160
78021002 OHV270
78021003 OHV390



VARILLA CARBURADOR
Carburetor connecting rod
188090062 OHV80/90



CARBURADOR
Carburetor
188090050 OHV80/90
78008001 OHV160
78008002 OHV270
78008003 OHV390
78008004 OHV120



PALANCA STARTER
Carburetor choke lever
78023001 OHV160
78023002 OHV270
78023003 OHV390



SEPARADOR
Carburetor connector
188090049 OHV80/90



TAPÓN DEPÓSITO
PLÁSTICO
Plastic fuel tank cap
78006001
TAPÓN DEPÓSITO
METÁLICO
Metalic fuel tank cap



FILTRO GASOLINA DEPÓSITO
Carburetor connecting rod
188650005
OHV120/160/270/340/390



DEPÓSITO COMBUSTIBLE
Fuel tank
18809007 OHV80/90
78005001 OHV160
78005002 OHV270
78005003 OHV390
78005004 OHV120



TUBO GASOLINA
Fuel hose
188090075 OHV80/90
188500028 OHV120/160



PROTECTOR TUBO ESCAPE
Muffler protector
78024001 OHV160
78024002 OHV270
78024003 OHV390



TUBO ESCAPE
Muffler
78009001 OHV160
78009002 OHV270
78009003 OHV390



CODO COLECTOR ESCAPE
Pipe exhaust
78010002 OHV270
78010003 OHV390



ANLAJE FILTRO AIRE
COMPLETO
Air filter assy
78002001 OHV160
78002002 OHV270
78002003 OHV390



FILTRO AIRE BAÑADO
EN ACEITE
Air filter assy, Oil bath
78001011 OHV160



FILTRO DE AIRE
Air filter element

78001001
78001002
78001003
188120008

OHV160
OHV270
OHV390
OHV120



FILTRO AIRE ESPUMA
Air filter sponge

78001012

OHV160



KIT COMPLETO FILTRO AIRE
Air cleaner element

188090051

OVH80



FILTRO DE AIRE
Air cleaner element

188090052

OVH80/90



TAPA DE BALANCINES
Cylinder head cover assembly

188090045

OVH80/90



JUNTA TAPA BALANCINES
Cylinder gasket

188090027
1880900271

OVH80
OHV90



KIT BALANCINES
Valve rocker arm

78027001
78027002
78027003

OHV160
OHV270
OHV390



KIT BALANCINES
Valve rocker arm

188090041

OHV80/90



CULATA
Cylinder head

188090037
188090371
78028001
78028002
78028003

OHV80
OHV90
OHV160
OHV270
OHV390



SEGMENTOS
Piston ring

188090035
1880900351
78013001
78013002
78013003

OHV80
OHV90
OHV160
OHV270
OHV390



KIT VÁLVULA
ADMISIÓN Y ESCAPE
Valve in.Ex

78026001
78026002
78026003

OHV160
OHV270
OHV390



VÁLVULA ADMISIÓN
Intake valve

188090034

OHV80/90



BIELA
Connecting rod

188090032
78014001
78014002
78014003

OHV80/90
OHV160
OHV270
OHV390



EMPUIADOR VÁLVULAS
Push rod

188090029

OVH80/90



ELEVADOR VÁLVULAS
Valve lifter

188090028

OVH80/90



JUNTA CULATA
Head cover gasket

188090044

OVH80/90



RETEN DE VÁLVULAS
Valve stem seal

78026011
78026012
78026013

OHV160
OHV270
OHV390



MOTOR DE ARRANQUE
Starting motor

188160115
188270117
188390067

OHV160
OHV270
OHV390



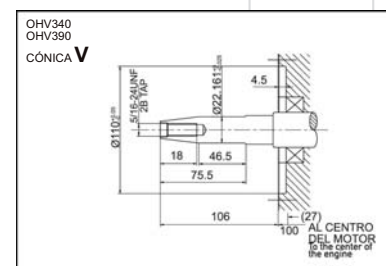
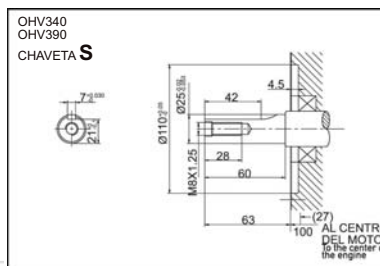
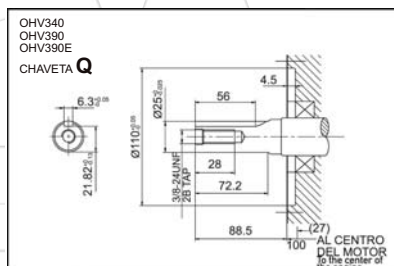
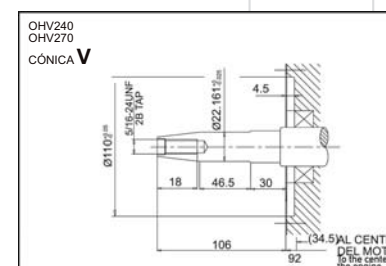
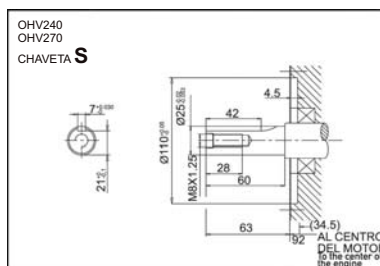
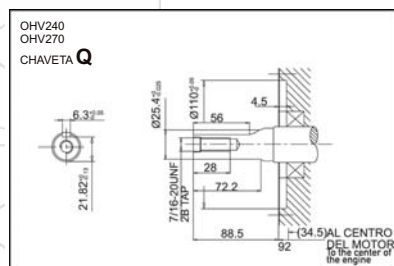
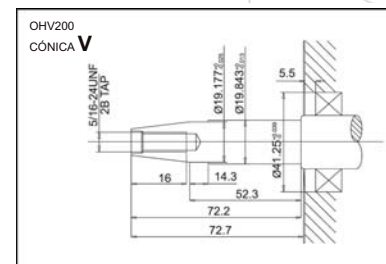
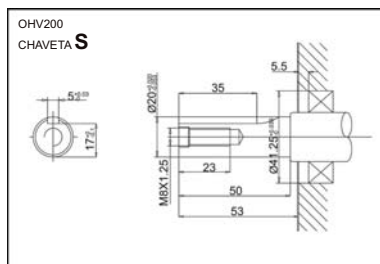
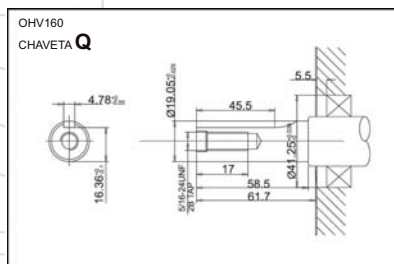
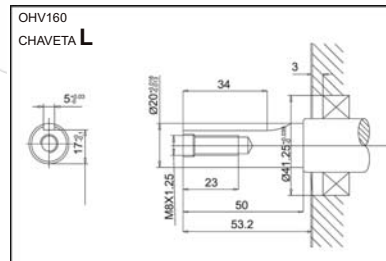
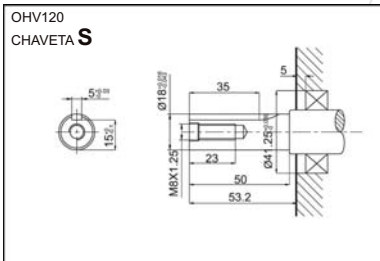
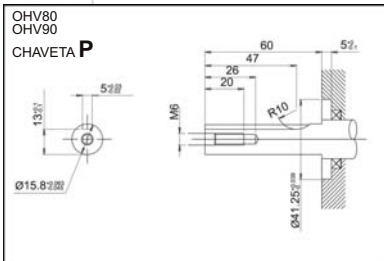
KIT PISTÓN,
SEGMENTOS Y BULÓN
Piston kit

78012001
78012002
78012003
78012004
78012005
78012006

OHV160
OHV270
OHV390
OHV120
OHV240
OHV340

KIT PISTÓN, SEGMENTOS
Y BULÓN SOBREDIMENSIONADO
Piston kit
(with ring, pin and clip) Oversize

Ref.	Tipo motor Motor type	Sobre- dimensionado Oversize
78012505	OHV340	0.25
78015005	OHV340	0.50
78012507	OHV120	0.25
78015007	OHV120	0.50
78012508	OHV160	0.25
78015008	OHV160	0.50
78012503	OHV200	0.25
78015003	OHV200	0.50
78015009	OHV240	0.50
78012504	OHV270	0.25
78015004	OHV270	0.50
78012506	OHV390	0.25
78015006	OHV390	0.50





883GEN2500
883GEN3000



883GEN6500E



883GEN6500



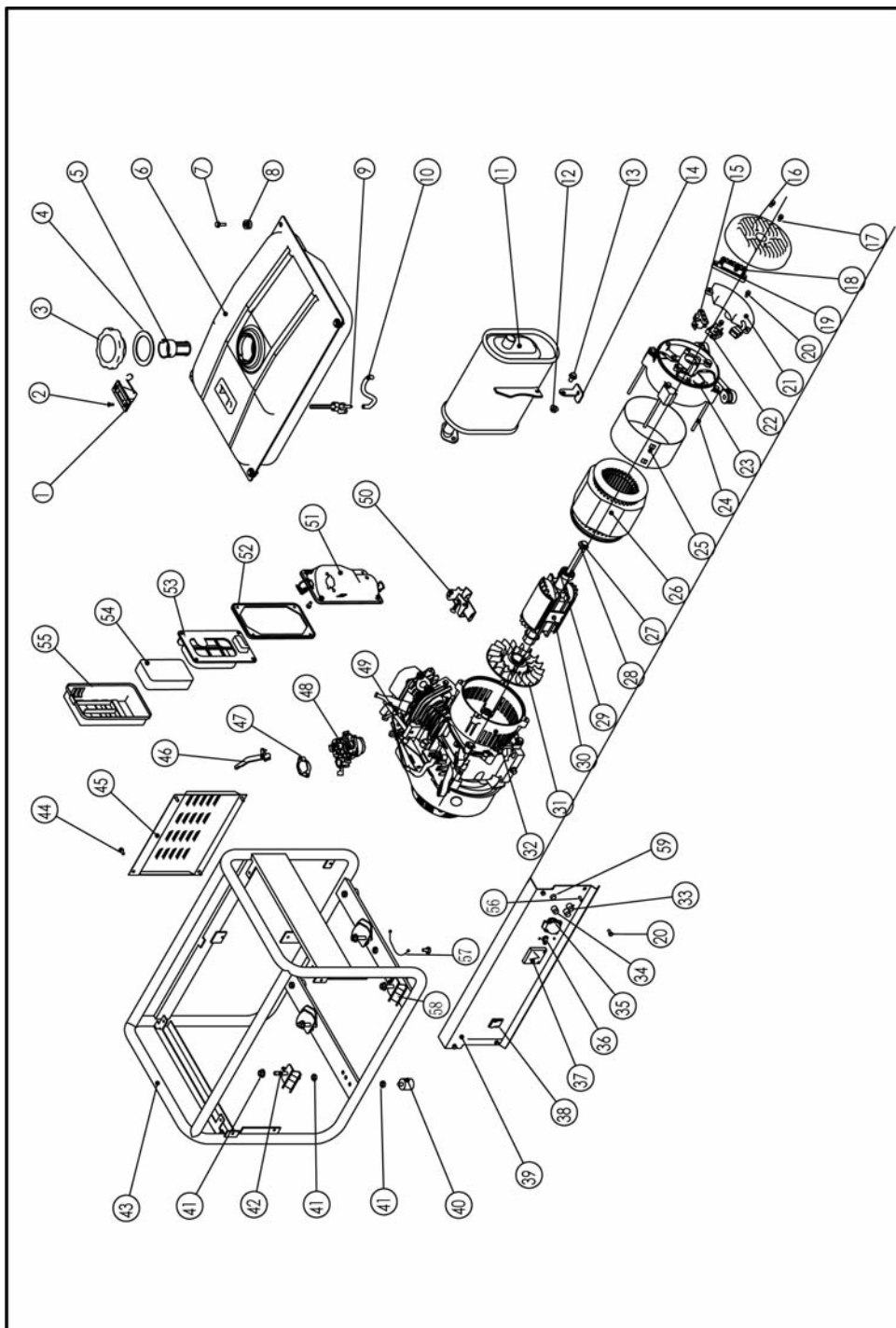
883GEN6500T
Trifásico
Three-phase

	883GEN2500	883GEN3000	883GEN6500	883GEN6500E	883GEN6500T
Tipo motor Engine type	OHV 160	OHV 200	OHV 390	OHV 390	OHV 390
Máx. potencia salida Max. power output	5,5HP / 3600rpm	6.5HP / 3600rpm	13HP / 3600rpm	13HP / 3600rpm	13HP / 3600rpm
Sistema arranque Ignition system	Manual	Manual	Manual	Eléctrico y Manual Electric and manual	Manual
Capacidad depósito Fuel tank capacity	15 L	15 L	25 L	25 L	25 L
Máx. horas uso continuo Continuous operating hours	13 h	13 h	9 h	9 h	9 h
Nivel sonoro a 7 m. Operating noise level at 7m	67 dB	68 dB	76 dB	76 dB	97 dB
Voltaje / Frecuencia Voltage / Frequency	230V / 50Hz	230V / 50Hz	230V / 50Hz	230V / 50Hz	230V-380V / 50Hz
Potencia / Máx. potencia AC output / Max. AC output	2,0 Kw / 2,2 KVA	2,5 Kw / 3,125 KVA	5,0 Kw / 5.5 KVA	5,0 Kw / 5.5 KVA	5,0 Kw / 5.5 KVA
Peso neto / N.W.	39 Kg	42 Kg	83 Kg	90 Kg	83 Kg
Dimensiones Measurement	605x400x460 cm	605x400x460 cm	700x525x560 cm	700x525x560 cm	700x525x560 cm

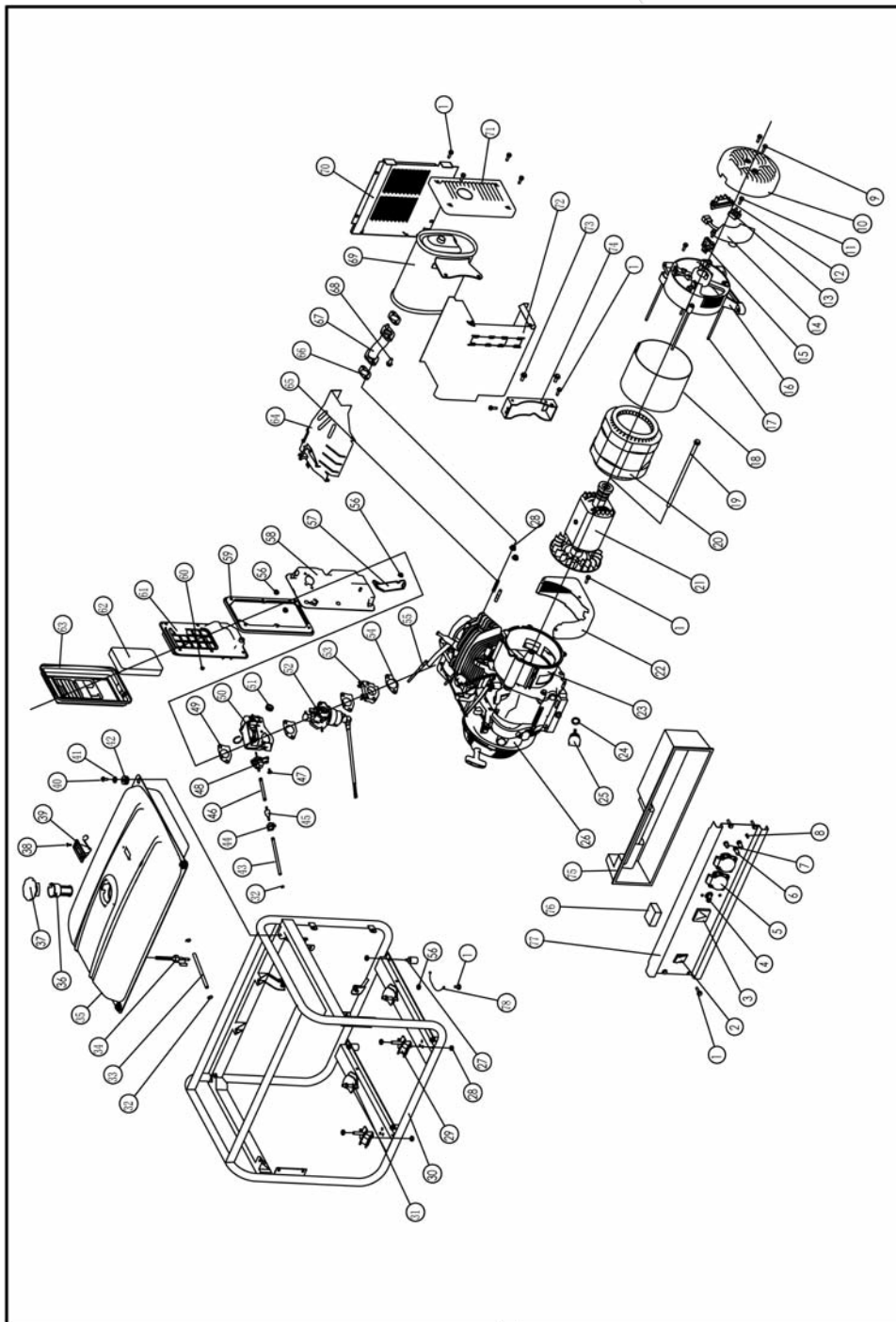


883GEN1050L	
Potencia maxima Max. output	1050 W / 50 Hz / 230 V
Tipo motor Engine type	4 tiempos OHV 3,0 Hp 4 stroke OHV 3,0 Hp
Refrigeracion Cooling system	Aire forzado Air cooled
Sistema arranque Starting system	Manual Recoil
Capacidad del deposito Fuel tank capacity	5,5 L
Tipo de combustible Fuel type	Gasolina sin plomo Unleaded gasoline
Nivel sonoro a 7 mts Operating noise level at 7m	69 dB
Peso aprox. Weight (Approx)	25 Kgs

serie 2500



serie 6500



repuestos series 2500-6500



INTERRUPTOR
Switch

188250022 GEN2500
188650004 GEN6500



MEDIDOR DE VOLTAJE
Voltage meter

188250021 GEN2500
188650011 GEN6500



INTERRUPTOR CIRCUITO AC
AC circuit breaker

188250020 GEN2500
188650006 GEN6500



ENCHUFE
Receptacle

188250019 GEN2500
188650007 GEN6500



BORNES POSITIVO/NEGATIVO
Pole +/-

188250017 GEN2500-6500



FUSIBLE
Fuse

188250018 GEN2500-6500



TERMINAL ELÉCTRICO
Terminal

188250009 GEN2500
188650009 GEN6500



PUENTE RECTIFICADOR
Bridge rectifier

188250012 GEN2500
188650010 GEN6500



REGULADOR DE VOLTAJE
AVR

188250011 GEN2500
188650011 GEN6500



ESCOBILLAS ALTERNADOR
Alternator brush

188250007 GEN2500
188650012 GEN6500



ROTOR
Rotor

188250015 GEN2500
188650013 GEN6500



VENTILADOR
Cooling fan

188250016 GEN2500



TAPÓN ACEITE
Oil gauge

188650020 GEN6500



CONJUNTO DIODO
Diode assy

188250026 GEN2500
188650017 GEN6500



TUBO GASOLINA
Fuel hose

188250027 GEN2500
188650021 GEN6500



GRIFO GASOLINA
Fuel cock

188250006 GEN2500-6500



DEPÓSITO GASOLINA
Fuel tank

188250005 GEN2500
188650014 GEN6500



FILTRO GASOLINA
Fuel filter

188650005 GEN2500-6500



TAPÓN DEPÓSITO GASOLINA
Fuel tank cap

188250003 GEN2500
188650001 GEN6500



VISOR NIVEL DEPÓSITO
Fuel meter

188650001 GEN2500-6500



CARBURADOR
Carburetor
1882500029 GEN2500
188650025 GEN6500



ESPONJA FILTRO AIRE
Air cleaner element
188250023 GEN2500
188650016 GEN6500



SOPORTE CONTROL REGULACION
Throttle control rack
188250028 GEN2500



SOPORTE CONTROL REGULACION
Throttle control rack
188650022 GEN6500



TUBO DE ESCAPE
Muffler
188250025 GEN2500
188650021 GEN6500



SILENTBLOCK
Vibration absorber
188090071 GEN2500
188090072 GEN6500



PATA DE GOMA
Frame rubber absorber
188090070 GEN2500-6500



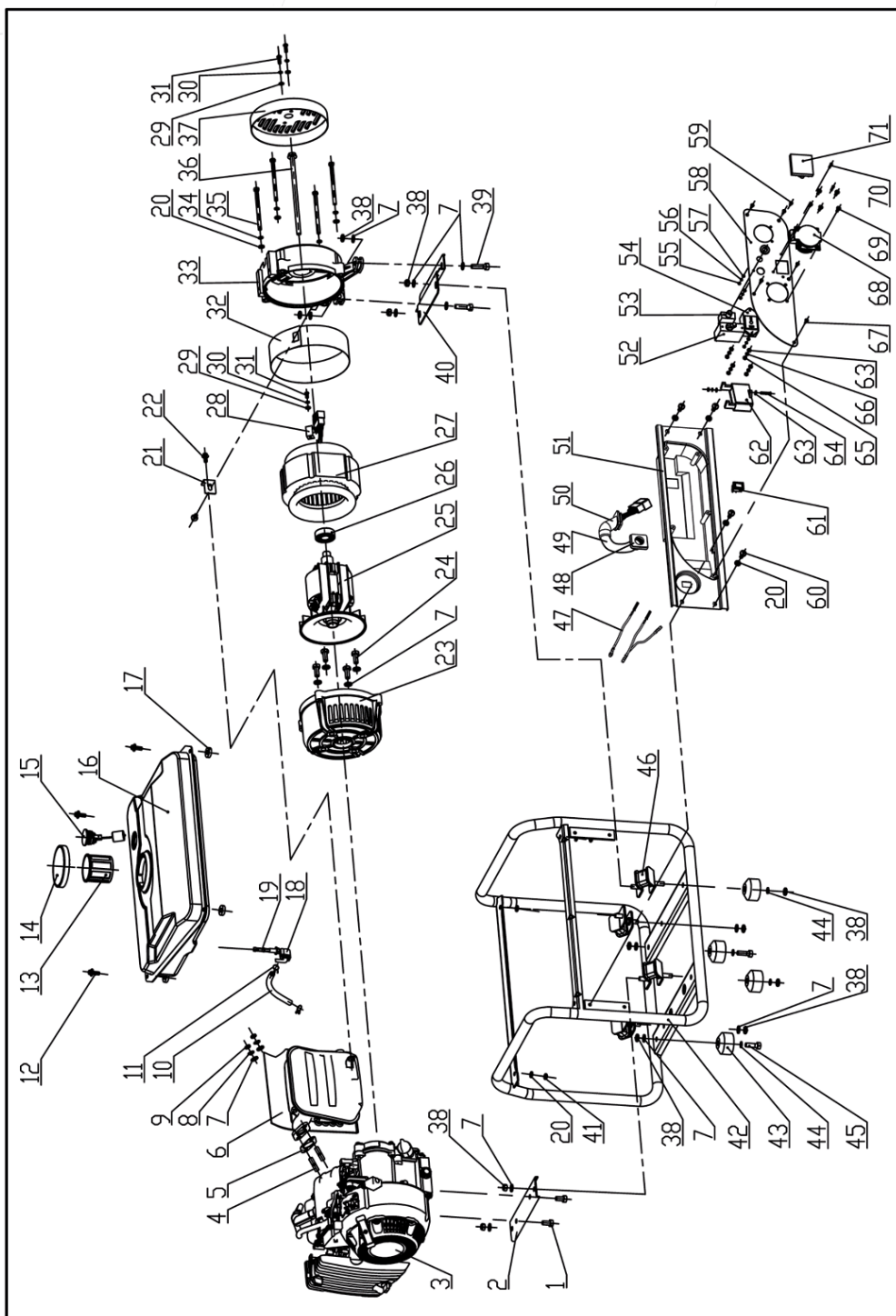
LLAVES CONTACTO
Keys
188650024E GEN6500E



KIT 2 RUEDAS NEUMÁTICAS + SOPORTE
2 Pneumatic wheel set + support
883GENRUE1 GEN6500



serie 1050



repuestos serie 1050



SILENCIADOR COMPLETO
Muffler
1881050006



FILTRO GASOLINA TAPÓN
Fuel filter
1881050014



TAPÓN DEPÓSITO GASOLINA
Fuel tank cap
1881050015



VISOR NIVEL DEPÓSITO
Fuel meter
1881050016



DEPÓSITO GASOLINA
Fuel tank
1881050017



GRIFO GASOLINA
Fuel cock
1881050018



SOPORTE DEL SILENCIADOR
Muffler supporter
1881050019



CARCASA DELANTERA ALTERNADOR
Alternator front frame
1881050022



ROTOR + ESTATOR
Rotor & stator assembly
1881050024



CARCASA TRASERA ALTERNADOR
Rear frame
1881050032



TAPA CARCASA TRASERA ALTERNADOR
Alternator rear cover
1881050036



SOPORTE DEL ALTERNADOR
Electrical machinery rack
1881050039



SILENTBLOCK
Silent block
1881050042



DESCONECTADOR CIRCUITO
Circuit breaker
1881050050 AC
1881050051 DC



ENCHUFE DC
DC socket
1881050052



PANEL DE CONTROL
Control panel
1881050056



CONMUTADOR MOTOR
Engine switch
1881050063



CONDENSADOR
Condenser
1881050065



ENCHUFE AC
AC socket
1881050061

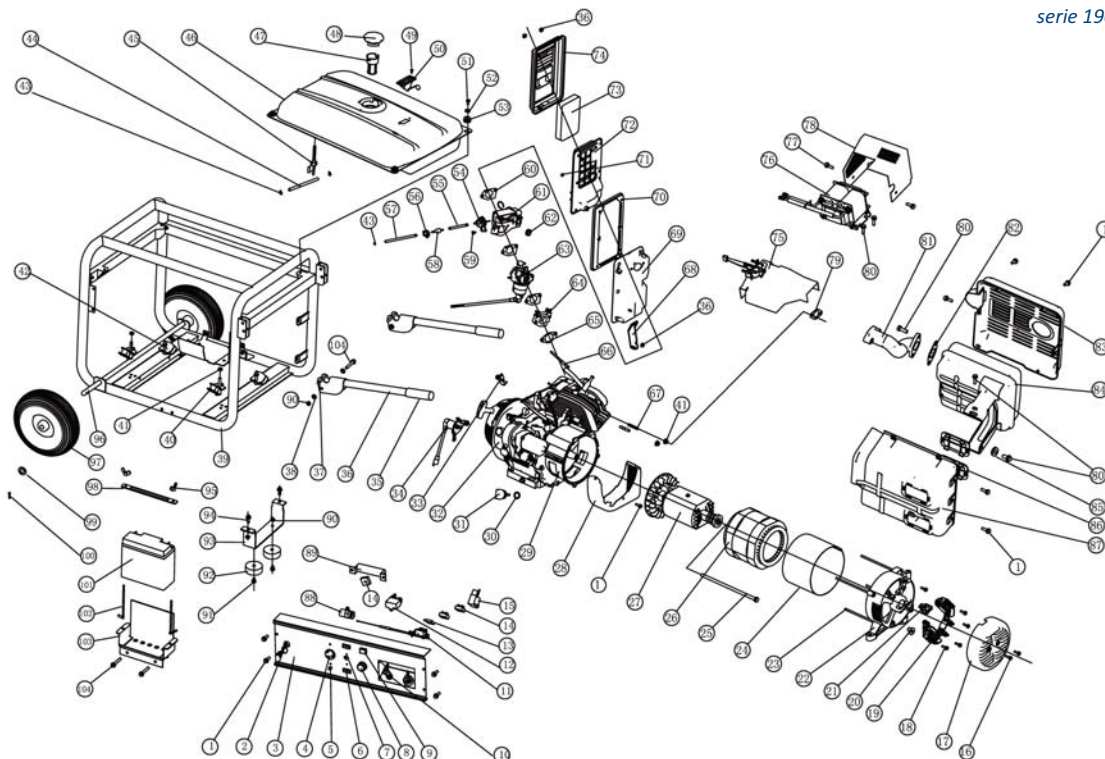


VOLTÍMETRO
Voltage meter
1881050059



883GEN190E	
Tipo motor Engine type	OHV390
Máx. potencia salida Max. AC output	13HP / 3600rpm
Sistema arranque Starting system	Eléctrico / Manual Electric / Manual
Capacidad depósito Fuel tank capacity	25 L.
Máx. horas uso continuo Continuous run time	9 h.
Nivel sonoro a 7 m. Operating noise level (7m)	76 dB
Voltaje / Frecuencia Voltage / Frequency	230V / 50Hz
Máx. potencia generador Max. generator power	2,2 Kw
Máx. potencia soldador Max. welding power	2,75 KVA 50-190A/h
Peso neto / N.W.	90 Kg.
Dimensiones / Measurement	695x558x572 cm

serie 190E



repuestos serie 190E



CONMUTADOR
Switch
188190002



PANEL DE CONTROL
Control panel
188190003



ENCHUFE
Socket
188190004



AUTOESTRANGULADOR
Auto throttle
188190006



CONMUTADOR DE AC
AC circuit breaker
188190007



AJUSTADOR DE CORRIENTE
Current adjuster
188190008



LAMPARA PILOTO
Pilot lamp
188190009



TERMINALES
Terminals
188190010



INTERCAMBIADOR
Transformer
188190011



TRANSFORMADOR
Transformer
188190012



DIODO
Diode
188190013



RECTIFICADOR
Rectifier
188190014



ENSAMBLAJE DIODO
Diode assembly
188190015



TAPA TRASERA
Rear cover
188190017



TERMINALES
Terminals
188190019



CAMISA AISLANTE
Insulation sleeve
188190020



ESCOBILLAS CARBÓN
Carbon brush
188190021



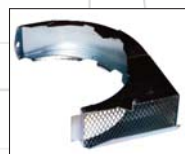
CARCARA TRASERA ALTERNADOR
Alternator rear frame
188190022



ESTATOR
Stator
188190026



TORNILLO M6x179
Screw M6x179
188190023



PROTECTOR VENTILADOR
Carbon brush
188190028



PROTECTOR EJE CIGÜEÑAL
Crankcase cover
188190029



INTERRUPTOR CORTA CORRIENTE
Break circuit
188190034



VÁLVULA UNIDIRECCIONAL
One-way valve
188190058



JUNTA ESTRANGULADOR
Gasket
188190060



ESTRANGULADOR COMPLETO
Choke assembly
188190061



CARBURADOR
Carburetor
188190063



SEPARADOR CARBURADOR
Carburetor insulator
188190064



JUNTA SEPARADOR CARBURADOR
Carburetor insulator gasket
188190065



SOPORTE FILTRO AIRE
Air cleaner support
188190068



FILTRO AIRE COMPLETO
Air cleaner
188190069-74



ESPONJA FILTRO AIRE
Air cleaner base
188190069



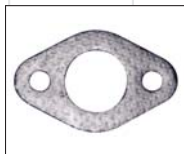
SOPORTE BRAZO GOVERNADOR COMPLETO
Governor rack assembly
188190075



REACTOR
Reactor
188190076



TAPA REACTOR
Reactor cover
188190078



JUNTA TUBO ESCAPE
Exhaust gasket
188190079



TUBO ESCAPE
Exhaust pipe
188190081



PROTECTOR EXTERIOR SILENCIADOR
Muffler outer protector
188190083



SILENCIADOR COMPLETO
Muffler
188190084



CASQUILLO SILENCIADOR 8,5 Ø
Bush 8.5
188190085



PROTECTOR INTERIOR SILENCIADOR
Muffler inner protector
188190087



CONDENSADOR 100V 2200uF
Capacitor (100V 2200uF)
188190088



RESISTENCIA
Resistance
188190089



DEPÓSITO DE GASOLINA
Fuel tank
188650014



FILTRO GASOLINA
Fuel cock filter
188650005



TAPÓN DEPÓSITO GASOLINA
Fuel tank cap
188650001



VISOR NIVEL DEPÓSITO
Fuel meter
188650001